



# DRILLING LOG



FROM :(mt) 1040

TO :(mt) 2360

SCALE : 1/ 1000

Well Name : BMA A20A

Company : ESSO AUSTRALIA

Country : AUSTRALIA

RT-MSL : 32.82 m

Final TD : 2326.0m

RT-SEABED : 92.22 m

Final TVD : 2029.7m

Generated by ALS Package

DATE	ROP (m/hr)				DEPTH (m)	LITHOLOGY	WOB klbs				RPM			SPP psi				FLOW gpm			TORQ lb-ft		
	500	50	5	.5			10	20	30	40	100	200	300	1K	2K	3K	4K	250	500	750	5K	10K	15K
	MWD Gamma Ray (api)				0																		
					100																		
					200																		
					1040																		
					1060																		
					1080																		
					1100																		
					1120																		
					1140																		

**PREVIOUS WELL HISTORY**  
Plugged & Abandoned October, 2005

10-3/4" Surface Csg 1123.0m MDRT

NW: 9.6  
RV: 56  
PV: 13  
YP: 19  
Gel: 7/16  
WI: 5.0  
PPF: 10.3  
CI: 35.5k

BIT #1 8-1/2"  
Smith S73PX  
Jets: 6k20  
In : 1123.0m MDRT  
Out : 1193.0m MDRT  
Run : 70m  
Hrs : 1.2  
Cond: 0-0-NO-A-X-IN-NO-DP

BIT #1RR 8-1/2"  
Smith S73PX  
Jets: 6k20  
In : 1123.0m MDRT  
Out : 2326.0m MDRT  
Run : 1203.0m  
Hrs : 54.3  
Com:

Bream A20A spudded from 1123.0m MDRT at 01:30 hours on 14-10-2005.

7" Casing cut and pulled from 1195.0m MDRT. Cement plug at 1106.0m MDRT. Cement drilled from 1106.0m MDRT to 1193.0m MDRT without formation. Cement plug #2 at 1079.0m MDRT

Mud motor K=0.29 rev/gal

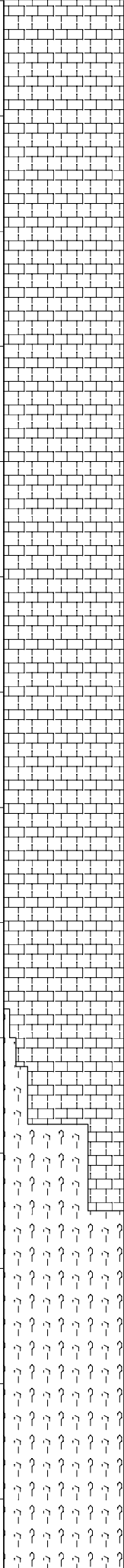
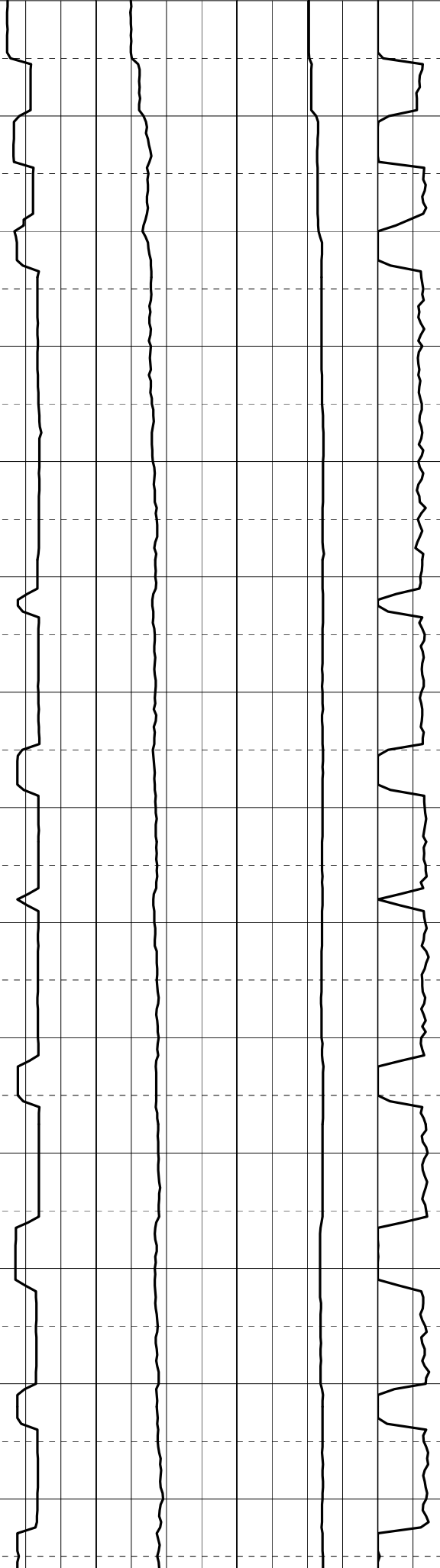
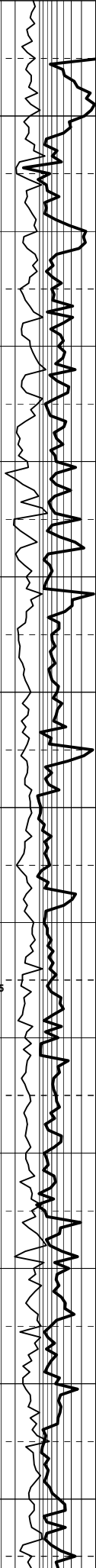
PIT at 1159.0m MDRT 900.7m TVDRT 540 psi 9.5 ppg EMW:13.0 ppg

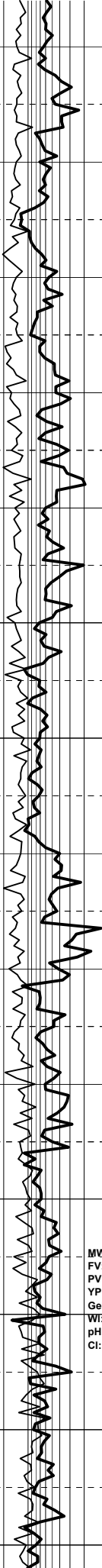
1160  
1180  
1200  
1220  
1240  
1260  
1280  
1300  
1320  
1340  
1360  
1380  
1400

MW: 8.6  
FV: 76  
PV: 30  
YP: 44  
Gel: 10/22  
WI: 4.0  
pH: 11.7  
Cl: 39.5K

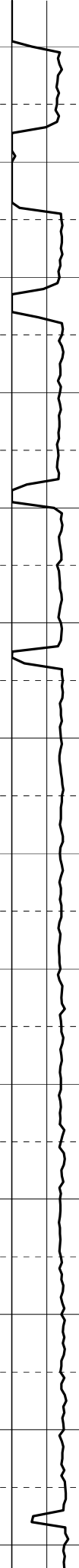
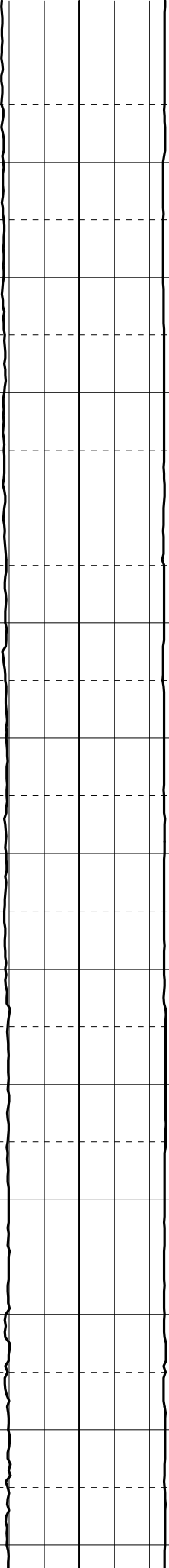
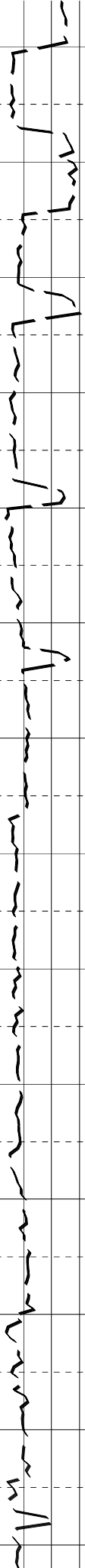
15-10-05

Handwritten notes in the center of the page, including the word "Handwritten" and other illegible scribbles.





1420  
1440  
1460  
1480  
1500  
1520  
1540  
1560  
1580  
1600  
1620  
1640  
1660  
1680



MW: 9.8  
FV: 69  
PV: 26  
YP: 42  
Gel: 12/18  
WI: 3.7  
pH: 9.9  
Cl: 39k

16-10-05



MW: 9.9  
FV: 74  
PV: 31  
YP: 43  
Gel: 12/24  
WF: 2.8  
pH: 9.1  
Cl: 44.5k

17-10-05

